

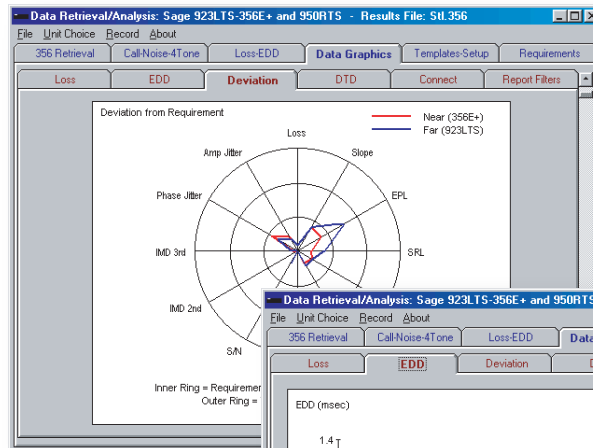
# T-TIMS 923/950

**Automated Data Capture, Data Acquisition, Data Analysis, and Report Generation of Voiceband Transmission Parameters for Sage's 923, 950 and 356E Plus**

Talon Test Systems T-TIMS 923/950/356E+ provides fully automated testing capability to capture important voiceband transmission parameters. In addition, T-TIMS provides call progress information, including a Call-back feature to verify proper switch and service provisioning of the desired customer loop and telephone number. The DC power feed voltage and current, ringing supply voltage and frequency, round-trip delay and call setup time plus a full suite of transmission impairments can all be obtained in less than three minutes.

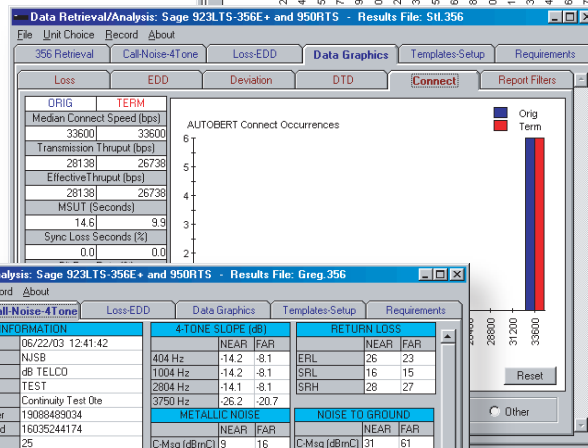
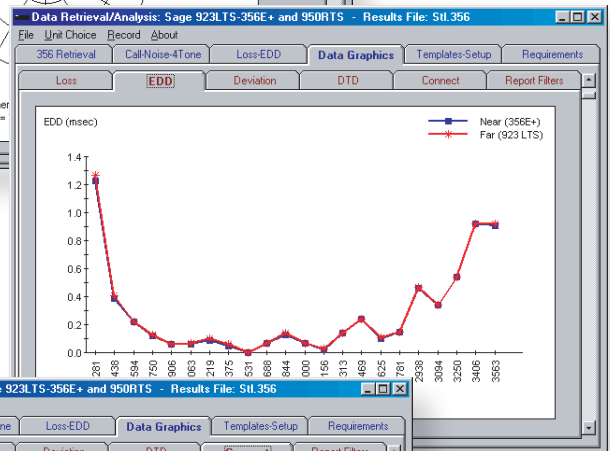
All test results are simultaneously captured in the portable equipment at the customer's site and in the terminal responder equipment placed at your LSO or designated Local Service Center. A comprehensive data collection, analysis and report generator minimizes data handling and provides efficient display of results.

For more information: [www.talontestsystems.com](http://www.talontestsystems.com)  
 E-mail: [info@talontestsystems.com](mailto:info@talontestsystems.com)  
 Voice: 1-603-524-7215



Unique radar plot of vital measurements tells all.

View line graphs of EDD and Loss.



View Connect Occurrences.

**CALL INFORMATION**

Test Date/Start Time	06/22/03 12:41:42
Tester ID	NUSB
System ID	dB TELCO
Order Number	TEST
Template	Continuity Test 0te
LUT Telephone Number	19088489034
Test Line Number Called	16035244174
VDC On-Hook (Volts)	25
Loop Current (mA)	22
Dial Tone Delay (ms)	199
Call Setup Time (Sec)	4.546
Ring Voltage (Volts)	77

4-TONE SLOPE (dB)		RETURN LOSS	
NEAR	FAR	NEAR	FAR
404 Hz	-14.2	-8.1	EPL 26 23
1004 Hz	-14.2	-8.1	SRL 16 15
2804 Hz	-14.1	-8.1	SRH 28 27
3750 Hz	-26.2	-20.7	

METALLIC NOISE		NOISE TO GROUND	
NEAR	FAR	NEAR	FAR
C-Msg (dBmC)	9 16	C-Msg (dBmC)	31 61
C-Notch (dBm)	25 33	3KHz Flt (dBm)	43 80
3KHz Flt (dBm)	13 20		

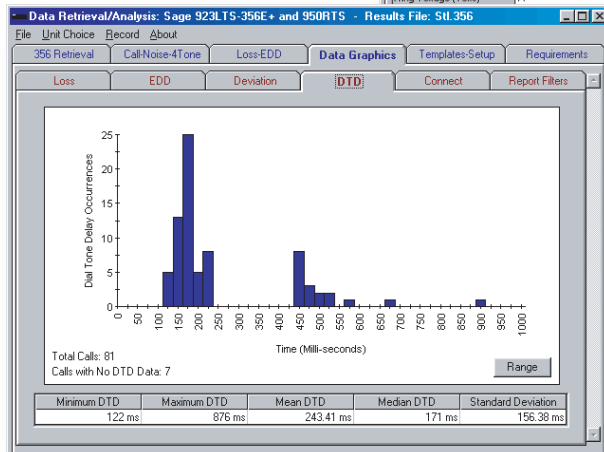
JITTER HIGH		TRANSIENTS	
NEAR	FAR	NEAR	FAR
Phase(*)	2.1 1.7	Imp Hts 46dBmC	0 0
Amp (%)	2.5 2.4	Imp Hts 50dBmC	0 0
		Imp Hts 54dBmC	0 0
		Gain Hts	0 0
		Phase Hts	0 0
		Drop Outs	0 0

PSQM			
Level (dB)		NEAR	FAR
Gender	Male	Delay (ms)	38.1 39.8
Speed	NA	PSQM	0.34 0.38
Palten	NA	MDS	4.79 4.76
Duration (Sec)	10	Gain (dB)	-12.6 -13.7

Call data is displayed in table form as well.

Histogram of Dial Tone Delay.



TALON TEST SYSTEMS LLC