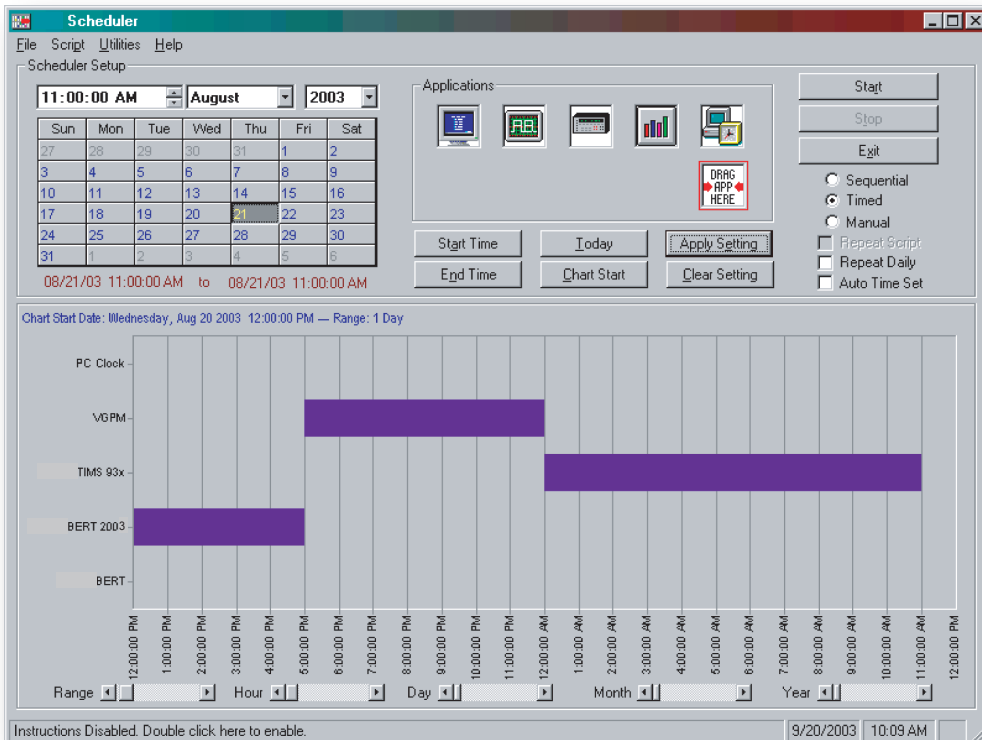


TTS Scheduler

Schedule Talon Test Systems Applications to Run Tests Automatically



TTS Scheduler uses a gantt style chart to indicate when the Talon Test Systems application will run.

Talon Test Systems TTS Scheduler allows you to schedule when Talon Test Systems applications will automatically run. Applications can be set to run within a specific range in time or in sequence starting at a specific time.

To setup an application to run at a specific range in time, just drag-and-drop the application icon, select the start and end time and date and click apply. Repeat until all desired applications have been set to run.

To setup an applications to run sequentially, choose a start time and date, then drag-and-drop the application icons.

*For more information: www.talontestsystems.com
E-mail: info@talontestsystems.com
Voice: 1-603-524-7215*



TALON TEST SYSTEMS LLC